

WASHINGTON PARK TUDOR



1225 39th Avenue East

\$1,495,000

John Daniels

JDaniels@windermere.com
206.679.0382

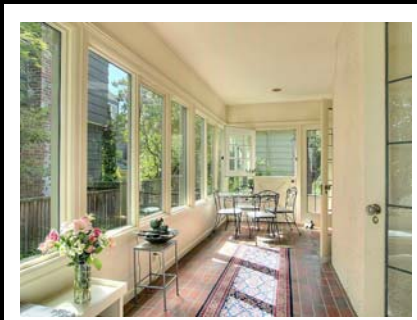
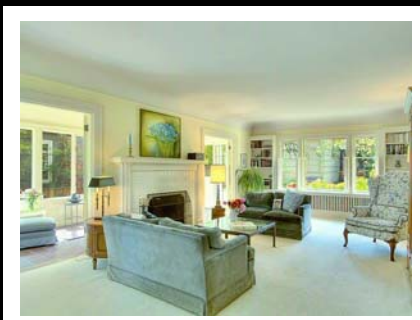
and

Al Johnson

AlJohnson@windermere.com
206.595.6000


Windermere

Windermere Real Estate/ Northwest, Inc.





Details:

- ◆ Superbly maintained by engineer-owner since 1964.
- ◆ Wonderful formal dayrooms with loads of light.
- ◆ Elegant open center staircase.
- ◆ Sunroom off living room,
- ◆ Kitchen opens to family room with fireplace.
- ◆ Dutch doors to spacious back yard.
- ◆ Leaded glass windows.
- ◆ Four bedrooms and two baths up.
- ◆ Radiator heat, newer roof & boiler.
- ◆ Lovely back yard with deck and patio, and beautiful landscaping.
- ◆ Two-car garage on alley.
- ◆ Set above the street for a great feeling of privacy.
- ◆ Delightful neighborhood, steps to Madison Park shops, eateries and the Lake Washington shore.
- ◆ An easy commute to downtown.
- ◆ Shown by appointment: call your agent!



Essentials:

- ◆ Style.....Frame Tudor
- ◆ Year Built.....1925
- ◆ Exterior.....Wood
- ◆ Flooring.....Hardwood/Carpet
- ◆ Fireplaces.....Two
- ◆ Basement.....Mostly finished
- ◆ Garage.....Two car, on alley
- ◆ Heat.....Gas-fired hot water radiators
- ◆ Square footage.....3,560 KCA
- ◆ Lot size.....7,200 KCA
- ◆ Property Taxes.....\$10,686 (2007)



Dimensions are from King County Records and not warranted by owner or agent. Prospective purchasers are advised to verify to their satisfaction.